



ES-DHL1A & ES-DHL1B Holmium Lasers



OPERATING THEATRE



ES-DHL1A & ES-DHL1B

Holmium Lasers



ES-DHL1B



ES-DHL1A

- Multi Pumping Cavities Laser Coupling
- Multi-core Output Technology
- Laser Coupling Protection System
- Intelligent Optical Fiber System
- Power On Self Test System

Coupling the Output Protection Technology - Adopts the unique design, much to avoid the laser damage caused by the pollution of light path system. To improve the output energy and avoid laser power attenuation.

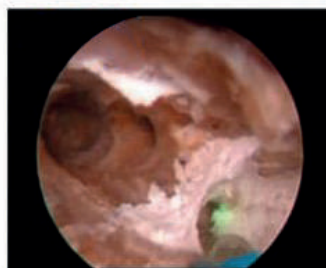
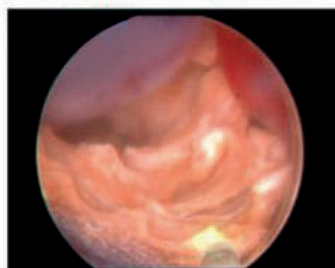
Laser Transmission System - About advanced coupling system can be used in the 200, 365 micron fiber with soft lens application. And it also can be used in 550, 800, 1000 micro fiber. They can truly make surgery minimally invasive and noninvasive.

LCD Touch Control Intelligent Store The control system has English touch LCD screen. And it also has automatic or manual parameter settings.

The standard cutting laser, the CO2 laser, is used since decades in all ENT clinics. Photoangiolytic lasers are relatively new and are not widespread in use in. In essence and to our opinion, the blue laser may be seen as the newest development of a combined laser technology.

The so called blue laser is a new and unique laser for laryngology. This 445nm laser broadens the spectrum of of applications and indications for surgeons as it combines photoangiolytic and cutting properties.

Some of the most significant advantages are photoangiolysis, cutting properties, glass fiber routing, portability, shock resistance of device and easiness of use. The blue laser can be used in-office for transnasal surgery as well as in general anesthesia. Contact-free lasering with gentle tissue treatment leads to many indications.



Treating the Whole Patient

Although the Holmium laser are best known for their urologic treatments, they are also indicated for many other non-urological applications. Its multi-specialty capability yields a high return on investment for your hospital.

Exceptional versatility

This product is suitable for clinical application to soft and hard tissue cutting, vaporization and urinary lithotripsy. So, it is well applicable to Urology, Gastroenterology, Orthopaedics, ENT, Thoracic & Pulmonary and so on.

UROLOGY

- Treatment of BPH
 - Bladder Neck Incision (BNI)
 - Transurethral Incision of the Prostate (TUIP)
 - Holmium Laser Ablation of the Prostate (HoLAP)
 - Holmium Laser Hesection of the Prostate (HoLRP)
 - Holmium Laser Enucleation of the Prostate (HoLEP)
- Lithotripsy of renal, ureteral and bladder calculi
- Lithotripsy of impacted calculi
- Ureteral and urethral strictures
- Bladder and ureteral tumors
- Bladder carcinomas

GASTROENTEROLOGY and GENERAL SURGERY

- Appendectomy
- Benign and malignant lesions
- Cholecystectomy
- Gall bladder and bile duct calculi
- Hemorrhoidectomy
- Lysis of adhesions
- Polypectomy

ORTHOPAEDICS

- Capsular shift (LACS)
- Chondroplasty
- Excision of plica
- Lateral retinacular release
- Meniscectomy in the knee
- Osteoarthritic lesions
- Synovectomy

ENT

- Polyps and granulomas
- Tonsillectomy/adenoidectomy
- Partial turbinectomy
- Laryngeal lesions

THORACIC & PULMONARY

- Airway obstructrons including carcinoma

GYNECOLOGY

- Benign endometrial polyps
- Endometriosis
- Peritoneal adhesions
- Submucous fibroids

PODIATRY

- Neuromas
- Periungual, subungual and plantar warts
- Radical nail excision



Holmium Laser
Enucleation of the
Prostate (HoLEP)



Holmium Laser
Ablation of the
Prostate (HoLAP)



Lithotripsy



Posterior Horn
Meniscectomy



Laser Assisted
Capsular Shift
(LACS)

HoLEP (Holmium laser prostate enucleation)

Applicable to the prostate of any size

Applicable to patients suffering from various TURP contraindications

HoLAP (Holmium laser prostate photoselective vaporization)

Applicable to small and medium prostate of 60 g and below

Model	ES-DHL1A	ES-DHL1B
Output power	20W	30W
Single pulse energy	2J, adjustable	3J, adjustable
Pulse frequency	10Hz, adjustable	15Hz, adjustable
Laser wavelength	2.1µm (2100nm)	
Pulse width	300µs~600µs adjustable	
Laser transmission system	Configuration of all kinds of optical fiber: 200, 365, 550, 365, 1000 microns, etc. Can be used with soft lens. Optical fiber can be used.	
Laser mode	multimode	
Fiber	reusable	
Display mode	colour LCD touch screen	
Indicator light	Red/green, optional	
Cooling system	The built-in water cooling, boot box, can work 24 hours continuously.	
Grid configuration	220V 50Hz	
Standard configuration	1xMedical holmium laser host, 1xOptical fiber 550µ/3m, 1xOptical fiber 200µ/3m, 1xFiber Cleaver, 1xPeeling scissors, 1xFiber Detector, 1xOperation Manual, 1xAccessory box, 1xFooter switch, 1xKeys, 1xLaser Safety Glasses	



ESSE3 srl, Via Garibaldi 30
14022 Castelnuovo D.B. (AT)
Tel +39 011 99 27 706
Fax +39 011 99 27 506
e-mail: danielec@esse3-medical.com
web: www.esse3.dreamgest.com

